

TE MOA IBUKIN TE KAABUNG (LAYING BIRDS)

IAI TENIUA(3) BWAAI AIKA A RANG KAKA-
WAKI BA E N TAURAOI N TAAINAKO

1. Te auti ke am O-ni-moa (Deep litter ke te Battery cage)
2. Kanan te moa
3. Niman te moa

1) TE AUTI KE TE O-NI-MOA

Iai uoua (2) aekan autin ke kawakinan te moa-ni-kaabung. Ao e kakawaki ba e na riai maitoro ao n rin te ang ae boou.

1. Deep Litter System

- ◆ 1.0—2.0 ft² e tau ibukin temanna te ti-na-ni-moa
- ◆ E na tau buburan te auti, buburana ma abwakina ni kaineti ma mwaitin te moa



- ◆ E na riai ni iai aia tabo ni kaabung (egg nest)
- ◆ E riai n roo teutana ba e na namakina te mwengaraoi n ana tai ni kabwakabwaka

Rietan nnen nimaia ao kanaia e na riai n titebo ma rietan rabatan te moa



- ◆ E riai ni iai kanoan te tabo ni bung n aron te bubu-n-tao, uteute, te ewanin, ao tabeua riki bwa e na mano raoi te bunimoa man te baereka ao te raeuaki

2. Caged ke Battery Caged System

- ◆ Mooa aika a mena n te oo: abwab-waki ke marangana 0.5—0.75 ft² ibukin temanna te moa



- ◆ Ana floor e riai ni barara rikaaki teutana ibukin te bunimoa bwa e na raabee nako tinaniku



2) KANAN TE MOA

IAI TENIUA (3) RINANIN KANAN TE MOA

I. STARTER FEED

Ibukin te kiokio man moan raurena ni karo- roko waniua (8) te wiiki. E aki baanaki

II. GROWER FEED

Man waniua(8) nakon tebwi –ma-waniua (18) te wiiki

III. LAYER FEED

Ibukin tebwi-ma-waniua nakon itibwi-ma- uoua(72) te wiiki. E baanaki nakon 110— 120 gram kanan temann te moa

Imwain anganakin te moa kanana ae boou e riai n kataneiaki (e.g 2 te bong 1/4 grower ao te 3/4 te starter ni karokoa 100% te grow- er te amarake ae boou

3) NIMAN TE MOA

MWAITIN TE RAN INANON TE BUNIMOA E NAKON 70%. NGAIA ARE E RANGI NI KAKAWAKI BWA E RIAI N TAURAOI N TAAINAKO TE RAN AE E ITIAKI IBUKIN TE MOA KE KARAOAN RAOI TE BUNIMOA



AGRICULTURE & LIVESTOCK DIVISION

INFORMATION, TRAINING & EXTENSION

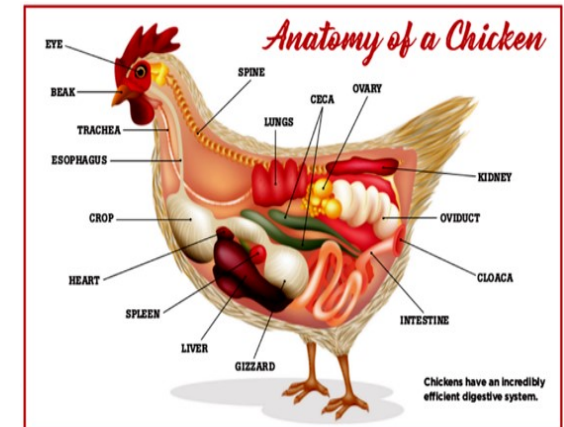
Phone: 75228108

PO BOX267

TANAEA, TARAWA

KIRIBATI

MOA NI KAABUNG



KAWAKINAIA

&

TARARUAKIA